

SOUND OF SWISS ITINERARY - 2026
7 NIGHTS 8 DAYS



Day 1

Arrive in Splendid Switzerland.

Welcome to Switzerland, a mountainous Central European country, home to numerous lakes, villages and the high peaks of the Alps. Upon arrival at the Zurich International airport complete the emigration formalities and proceed outside where you will be warmly welcomed by our Travel Professional and later proceed to your hotel.

Overnight at the hotel in Central Switzerland. (Dinner)



Day 2

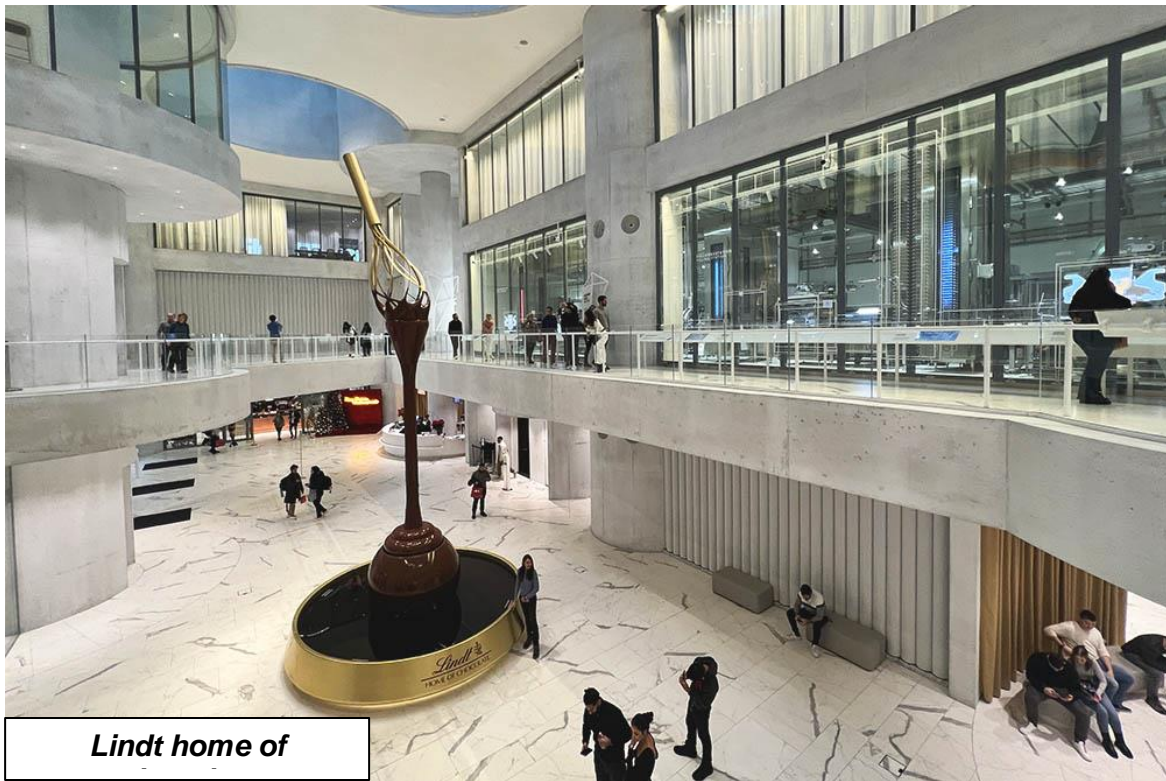
Witness the grandeur of the largest waterfall in Switzerland, the Rhine Falls with a boat ride. Entrance to Lindt home of Chocolate. Funicular ride to Polyterrace - a platform with a scenic view of Zurich. Orientation tour of Zurich.

Today relax in your vehicle as we drive to Schaffhausen, explore the

Rhine Falls boat

offers a thrilling close-up experience of the powerful cascading waters where you can behold

the breathtaking Rhine Falls, the largest and most stunning waterfall in Europe. The Rhine Falls have a drop of around 23 metres but are 150 metres wide making this a very large and impressive sight. Later drive to our next destination the enchanting Lindt Home of Chocolate. As you step into the lobby of this building, you'll immediately be captivated by its most prominent feature – the world's largest chocolate fountain. Standing at an impressive 9.3 meters tall and weighing 3 tons, this fountain flows with 1,500 liters of delectable chocolate. Prepare for an immersive and interactive chocolate tour that delves into the rich Swiss chocolate heritage. Immerse yourself in the world of chocolate, uncovering its origins and significance. The multimedia chocolate tour will unveil intriguing facts about chocolate,



Lindt home of

providing a multisensory

experience. From its creation to its cultural importance, this tour will engage all your senses, and you'll have an opportunity for unlimited chocolate tasting.

Next, we proceed to discover the sights of Zurich. Stroll through the beautiful city and see the business and financial centre, Bahnhofstrasse, the most important museums, a section of the Old Town, Münster Square entrance to the pedestrian area, historical Limmatquai, the University district, residential areas, beautiful hillside villas on the Zurichberg, as well as recreation areas and views of the Alps from Zurich's vantage points. Following the tour, we take the Polybahn funicular in Zurich is a historic and iconic transportation system that operates as a cable railway. The Polybahn offers a fun and unique experience. It provides beautiful views of Zurich and the surrounding area as it ascends and descends the steep hill.

Overnight at the hotel in Central Switzerland. (Breakfast, Lunch, Dinner)



Day 3

Orientation tour of Lucerne followed by a scenic cruise on Lake of Lucerne. Visit Mt. Titlis- enjoy Cable car rides including the world's first rotating cable car, the Rotair – to the top of Mt. Titlis at 3,020 metres.

Today proceed on an orientation tour of Lucerne one of most beautiful cities in Switzerland. Visit the Lion Monument, Kapell Brucke with some free time to shop for famous Swiss watches, knives and chocolates. Later enjoy a scenic and relaxing cruise on the lake of Lucerne. We continue to visit an amazing scenery, a once in a lifetime experience with an exhilarating tip to the top of Mt Titlis at 3020 metres on various cable cars including Rotair, the world's first revolving cable car. Get a breath taking unrestricted 360 degrees stunning view of the dazzling snow caped peak, deep crevasses and pristine white snow fields, dotted with massive ice boulders from every angle. Do not forget to visit the "Cliff Walk" the highest suspension bridge in Europe along the cliff of Mt.Titlis.

Overnight at the hotel in Meiringen. (Breakfast, Lunch, Dinner)



Cogwheel train to Jungfrau

Day 4

Enjoy a magical alpine excursion to the top of Europe - the amazing Jungfrauoch and scenic Interlaken. Visit Trummelbach Falls.

Get set for a memorable magical alpine excursion to Jungfrauoch – The Top of Europe, a high–point of your tour. First proceed to Grindelwald Terminal. The new 3S-Bahn Eiger Express takes you from the Grindelwald Terminal to the Eigergletscher station in just 15 minutes. There you board a cogwheel train to reach the highest railway station in Europe at 11,333 feet – a world of eternal ice and snow. Visit the Ice Palace where artistes create their work of art in ice. Visit the Sphinx observatory deck to experience a breath-taking panoramic view of the longest glacier in the Alps - Aletsch Glacier. Later proceed for an orientation tour of Interlaken and explore traditional aspects of Swiss culture in authentic settings and discover the beauty and history of Interlaken and its surroundings. Next, visit Trummelbach Falls – Europe's largest subterranean water falls. Falls are a series of ten glacier-fed waterfalls inside the mountain made accessible by a tunnel-funicular, built 1913, stairs, and illumination. They alone carry the meltwater of the glaciers from the Jungfrau down to the valley - up to 20,000 liters of water per second.

Overnight at the hotel in Meiringen. (Breakfast, Lunch, Dinner)



Golden Pass

Day 5

Enjoy the scenic Golden Pass Line from Interlaken to Montreux. Visit Chaplin's World at Vevey.

Today after your breakfast, we proceed to train station and board the GoldenPass Line which is a scenic train route in Switzerland that takes you from Interlaken to Montreux, offering breathtaking views of the Swiss Alps, pristine lakes, charming villages, and lush landscapes along the way. It is considered one of the most picturesque train journeys in Switzerland. Later we proceed to Montreux - a picturesque town located on the shores of Lake Geneva in Switzerland. It is known for its stunning natural beauty and cultural attractions which will give you a taste of the town's rich history, natural beauty, and cultural significance.



Chaplin's World

Continue to Chaplin's World, an engaging museum that brings the life and work of Charlie Chaplin to life through interactive exhibits and film sets, set within his former home. Return to Montreux for an orientation tour, where you'll stroll along the flower-lined lakeside promenade, admire the bronze statue of Charlie

Chaplin, and catch glimpses of Château de Chillon from the distance. The tour also showcases the town's Belle Époque architecture and its vibrant cultural atmosphere. Drive to Geneva and check in to your hotel.

Overnight at the hotel in Geneva. (Breakfast, Lunch, Dinner)



Day 6

Visit the car free town of Zermatt and view the Matterhorn. Orientation tour of Geneva.

Today after breakfast and proceed to Zermatt. Zermatt lies at the foot of the Matterhorn. It is



a mountain which known for its almost perfect pyramid shape. The town's touristic development is closely linked to what is most probably the world's most famous mountain. The vacation destination is a car-free zone, has preserved its original character and offers nearly unlimited possibilities as far as excursions are concerned and that is one of the best things about these charming Alpine locations

main street. Feel free to stroll around this exquisite town of Zermatt. Later, we return to the cosmopolitan city of Geneva for an orientation tour of Geneva, highlighting iconic landmarks such as the United Nations headquarters, the Jet d'Eau, and the charming Old Town.

Overnight at the hotel in Geneva. (Breakfast, Lunch, Dinner)

Day 7

Visit Olympic Museum at Lausanne. Visit Gruyère Cheese Farm. Orientation tour of Bern.



Bern Clock Tower

Begin your day with breakfast at the hotel before checking out. Depart for Lausanne to visit the renowned Olympic Museum (**closed on Monday**), dedicated to the history and values of the Olympic Games, the museum offers fascinating exhibits, interactive displays, and memorabilia celebrating the achievements of athletes from around the world. Later, proceed to the picturesque town of Gruyère, where you'll enjoy a visit to La

Maison du Gruyère Cheese Factory—a delightful experience uncovering the secrets of traditional Swiss cheese-making. From Gruyère, continue your journey to Switzerland's charming capital, Bern. Upon arrival, enjoy an orientation tour of Bern's UNESCO-listed Old Town. Stroll past medieval arcades, the iconic Zytglogge clock tower, and the Federal Palace. Later proceed to your hotel in Central Swiss and check in.

Overnight at the hotel in Central Switzerland. (Breakfast, Lunch, Dinner)

Day 8

Fly back home

As your memorable holiday comes to an end, today marks the day to return home. Bid farewell to the wonderful friends you've made along the way, carrying with you the delightful memories of your European journey — a treasure to cherish for a lifetime. Wishing you a safe and pleasant journey home!! **(Breakfast)**

Inclusion: Sightseeing and excursions

Switzerland

Zurich

- Visit the magnificent Rhine Falls with Boat Ride
- Entrance to Lindt Home of Chocolate
- Funicular to Polyterrace
- Orientation tour of Zurich

Lucerne

- Orientation tour of Lucerne
- See the Lion Monument and Kappel Brücke
- Enjoy a scenic cruise on Lake Lucerne

Engelberg

- Witness breath-taking mountain peaks and glaciers at Mt. Titlis
- Ride in the world's first revolving cable car
- Walk on the Highest suspension bridge in Europe - Titlis Cliff Walk

Interlaken

- Excursion to Jungfrauoch - Top of Europe
- Visit scenic Interlaken city
- Visit Trummelbach Falls

GoldenPass Line from Interlaken to Montreux

Vevey

- Entrance to Chaplin's World

Montreux

- Orientation tour of Montreux

Zermatt

- Visit the car free town of Zermatt
- Orientation tour of Zermatt
- View the Matterhorn

Geneva

- Orientation tour of Geneva
- See the Jet D'eau

Lausanne

- Entrance to Olympic Museum

Gruyere

- Entrance to Maison du Gruyere Cheese Factory

Bern

- Orientation tour of Bern.

Accommodation:

- 02 nights accommodation in La Maison / Radisson or similar in Central Switzerland
- 02 nights accommodation in Hotel Meiringen or similar in Meiringen
- 02 nights accommodation in Everness / Movenpick or similar in Geneva
- 01 night accommodation in La Maison / Radisson or similar in Central Switzerland

Meals

- Daily Continental Buffet Breakfast.
- 06 Indian Jain/Vegetarian/Non-Vegetarian Lunches.
- 07 Indian Jain/Vegetarian/Non-Vegetarian Dinners.

Driver Tips:

Tips to coach drivers for the duration of the tour is included.

What your tour price does not include:

- The cost of the Airfare, Passport, POE charges, Visa charges, Overseas Travel Insurance, etc.
- Any expenses of personal nature such as Porterage, Laundry, and Alcohol, Food or Drink not in the regular menus provided by us, mini bar and telephone calls
- Any extra meals not included in the itinerary. Meals are pre - set and a choice of menu is not available
- Cost of excursions, city sightseeing, entrance fees and local guides availed of by the passengers, other than that mentioned in 'What your tour price includes'
- GST, TCS and other taxes as applicable
- Anything which is not specified in the Itinerary

Instruction for Arrival & Departure Coach Transfers:

Zurich (ZRH Airport) Arrival Transfer: Flight landing time should be **between 08 AM – 02 PM**.

Zurich (ZRH Airport) Departure Transfer: The coach **will drop at ZRH Airport by 1100 AM**.

IMP Notes For Transfers

- Please advise your client that there may be waiting up to 02.30 Hours (Post reaching in arrival hall for Airport to Hotel Transfer & may be reach airport up to 06 hours before as per scheduled flight take off timings)
- If client doesn't agree upon scheduled SIC Transfer timings may book private transfer on additional cost. WOW Holidays will not reimburse any cost for private transfers.

BENEFITS OF BOOKING WITH WORLD OF WONDERS (WOW)

- With World of Wonders, there is peace of mind combined with guaranteed maximum financial gains.
- Most trusted and reliable. No hidden costs and surcharges.
- Lowest prices in the market with best all - inclusive product.
- Immediate profits before client travels.
- Professional, very supportive and honest in dealings for that extra comfort.
- Branded hotels in most cities like Hilton, Novotel, Marriott, Radisson, Four Points by Sheraton etc.
- Experienced & Professional Tour Manager included to ensure excellent client feedback.
- Complete client confidentiality is maintained; your client remains your client.
- Tours operated as GLOBAL FAMILY

Important Notes:

- A person below 12 years of age on the entire tour will be considered a child
- As a 3rd person in a triple room, most hotels use rollaway beds and room size may be the same as the double room
- Tours will operate subject to all Government regulations

- All Local taxes, entrances and services are calculated as on 1st September 2025, any increase in local taxes, entry tickets and other services has to be borne and paid by the traveller/agent.
- All transfers and extensive sightseeing with entrance fees (as specified in the itinerary) will be done in an air-conditioned coach
- It is suggested to carry One check in bag and one hand bag per person only, due to limited boot space in the coach
- Services of our Tour Manager or local representatives, while on tour
- On some occasions, you may have to join another group in case your group does not have adequate members
- A local representative or your coach driver may only be there to assist you during your initial part of the tour
- Land surcharges applicable on certain departure dates which will be notified
- If certain sightseeing/excursions are closed, then alternate sight- seeing will be arranged.
- Kindly note that on certain departure dates the tour routing could change. In some tours, there is also a possibility that the tour could operate in reverse itinerary. However, you will not miss any sightseeing or excursions that are mentioned in the itinerary unless its closed due to a holiday. Your Tour Manager will notify you the same
- In case of inordinate delays and strict driving laws, packed dinner may be provided on that day
- In case of any increase in any taxes in Europe, there would be a change in price which will be justified
- No refunds for unutilized services
- Please check with your Sales representative for final details
- In case of inordinate delays and strict driving laws, packed dinner may be provided on that day
- For any issues or redressal of any grievances, passengers/ end customers should approach their Travel agent only from where they have booked their tour
- Please Note that World of Wonders Travel Pvt. Ltd. ("WOW") is into Business to Business module and the Travel agent is a customer to WOW. There is no privity of contract between WOW and the end customer. Hence under no circumstances will WOW be held responsible for any grievance of the end customer
- Any disputes and claims are subject to exclusive jurisdiction of Bombay High Court at Mumbai
- WOW reserves the right to claim from the passengers, any additional expenses incurred due to delay or changes in the schedule of trains, flights, coach, cruise or other services
- WOW reserves the right to change any itinerary for operational reasons and reasons beyond the control of WOW due to Force Majeure related to weather conditions, strike, etc.
- WOW shall not accept any liability or responsibility for any damages, loss, injury, accident, death, delay, breakdown or irregularity, which may occur during the tour, due to weather conditions, strikes, war, quarantine and or any other cause whatsoever and all such loss or expenses must be borne by the passenger

- Tours are operated subject to Reserve Bank of India / Government of India regulations
- Tour cost is payable in EURO out of your BTQ entitlement of the passengers